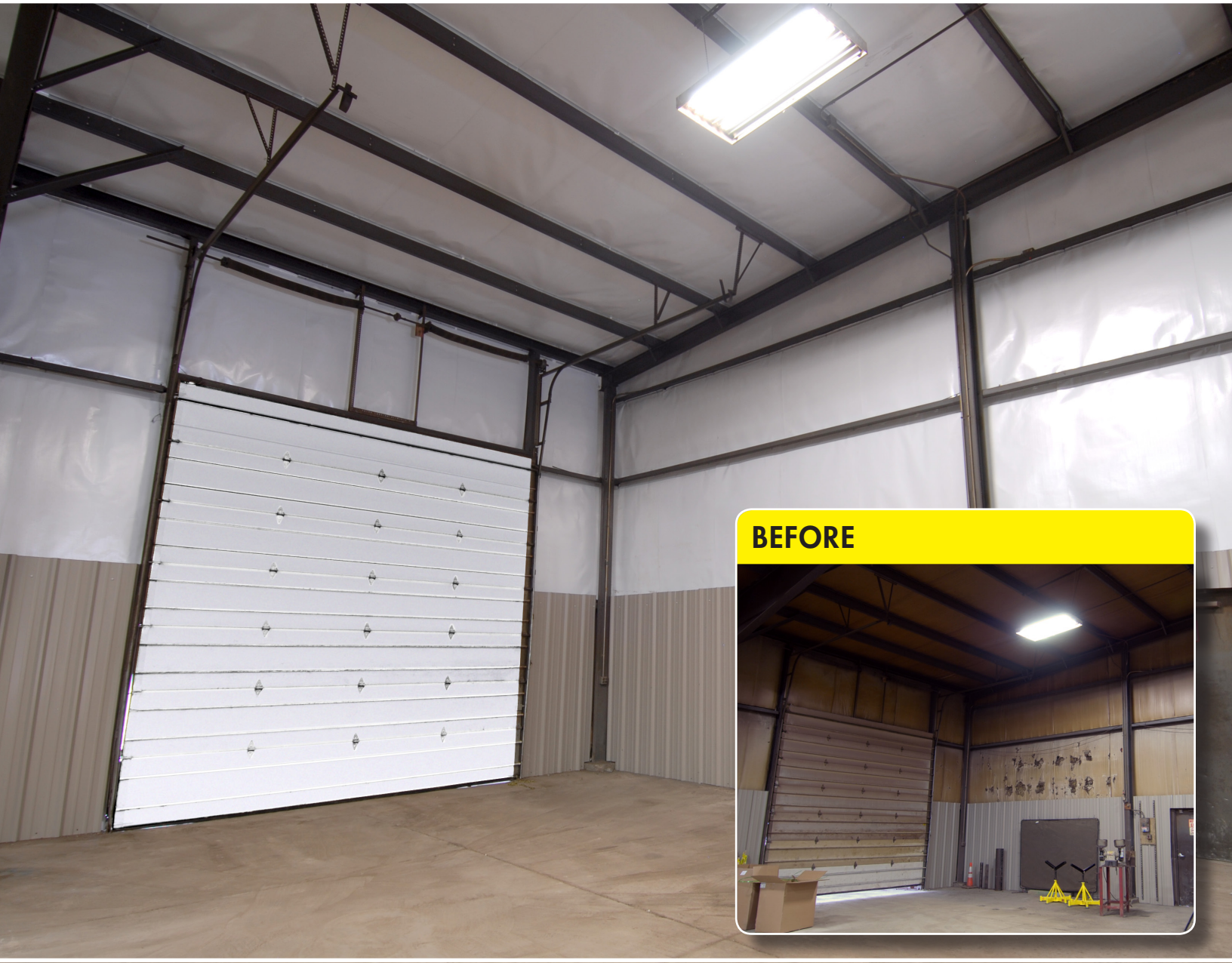


Installation Guidelines

WMP[®]-RETRO Re-Cover Facing Material



BEFORE

LAMTEC[®]
CORPORATION

5010 River Rd, Mount Bethel, PA 18343-5610 USA

Toll free: 800.852.6832 • Phone: 570.897.8200

WWW.LAMTEC.COM

LAMTEC[®] products are proudly
manufactured in the USA. 

THE LEADING SOURCE OF HIGH QUALITY INSULATION VAPOR RETARDERS - SERVING METAL BUILDING, DUCT WRAP, DUCT BOARD, AND PIPE INSULATION MARKETS

Disclaimer:

The following is provided as a general guideline of an appropriate method of resurfacing and re-covering damaged faced insulation in a metal building. It is not intended for, nor is it suitable for, all instances where metal building insulation facing is to be applied as a resurfacing or re-covering of damaged insulation facing. Such an application should only be done after any damaged or missing insulation is repaired or replaced and any building envelope issues, including infiltration of water, are addressed. The installer should always read and follow the manufacturer's written guideline for the application of the product, abide by all applicable building codes and all industry and government safety rules when engaging in any construction activity, including resurfacing or re-covering damaged facing insulation in a metal building.

Repair Any Damage to Building Before Installing

Before any interior renovation can take place, the roof and walls of the structure must be evaluated to ensure that the exterior cladding is weather tight and that all leaks and any damaged components are replaced or repaired. It is also extremely important that any condensation issues are addressed and corrective action taken to ensure that building HVAC systems are operating properly.

Check Local Codes

The local building officials or jurisdictions must be contacted to determine if permits or submittal paperwork is required prior to commencing any modifications to the building under consideration.

Examples of Damaged Facing



Suggested Tools & Equipment

Prior to starting the re-cover installation process, commonly available hand tools will be needed and all applicable safety, personal protection equipment, and procedures must be in place. If the use of lift equipment or work platforms is necessary to complete the installation, all training and safety requirements must be carefully followed.

Hard Hat



Safety Glasses



Work Gloves



Harness



Tape Measure



Utility Knife



Straight Edge



Cleaning Supplies



Spring Clamp



Double Sided Tape



Impact Drill



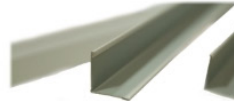
Nail Gun



Fasteners



Aluminum Wall Angle



Self-Locking Star Washers



Lift, Aerial Platform or Scaffolding as Required



Build a Work Table

A suitable work table should be available to cut and fold the WMP-RETRO material to the proper configuration prior to installation.

This table can be constructed using one sheet of plywood, 3/4" x 48" x 96", supported by a pair of saw horses. The length of the saw horse legs should be sufficient to provide a comfortable work height. The plywood sheet will provide the straight and square edges needed to make accurate cuts and folds in the facing.

Material list for the work table:

One - 3/4" x 48" x 96" sheet of plywood
Three - 2" x 4" x 96" studs
Two - 1" x 2" x 50" wood strips
Two - Saw horses or a suitable support for the work table
Wood/drywall screws, as required

Build the work table as follows:

Two studs, 2" x 4" x 96", should be screwed to the underside of the plywood, one stud parallel to each 96" edge, approximately 6" in from the edge.
Place on top of two saw horses or suitable support.

Build an unwind stand consisting of a base and two uprights to hold the roll of facing as follows:

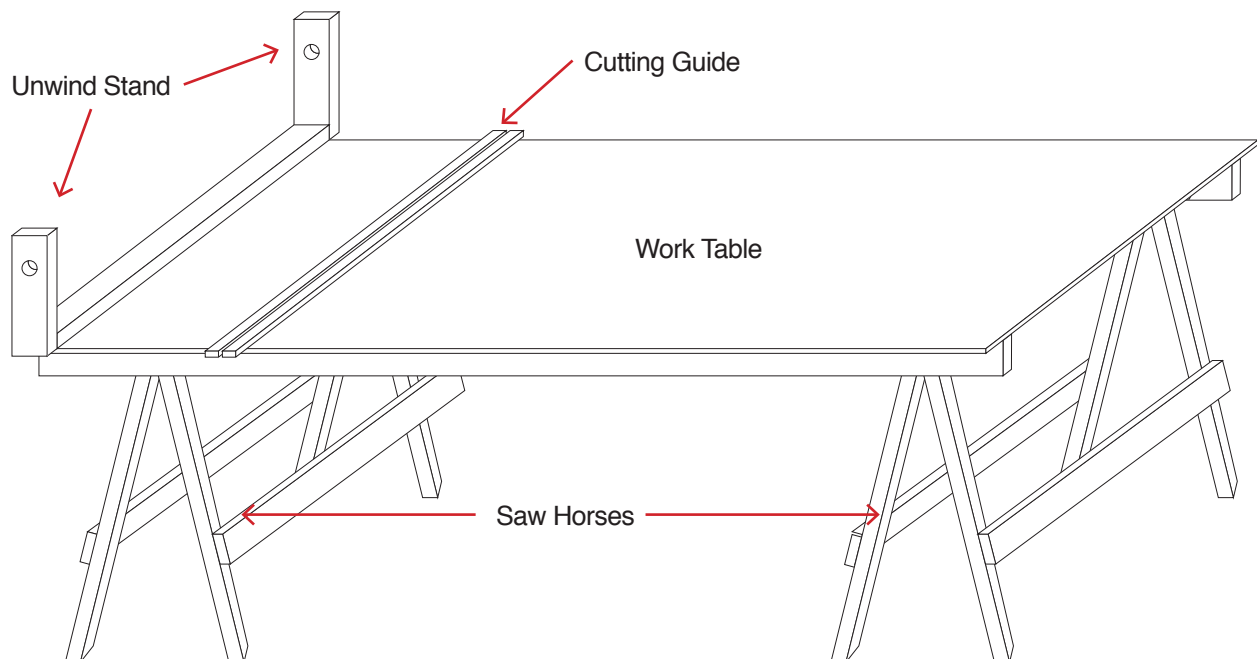
- Cut one section 2" x 4" x 48" (base).
- Cut two sections 2" x 4" x 12" (uprights).
- Drill a 1-1/2" hole in each of the 2" x 4" x 12" uprights. The centerline of the hole should be located approximately 3" from the top of the upright.
- Assemble the unwind stand by attaching the bottom side (side without the hole) of each 2" x 4" x 12" upright to the outer edges of the 2" x 4" x 48" base (there should be 48" between the uprights).
- Attach the base of the assembled unwind stand to one of the 48" ends of the work table.
- Use a 60" length of rigid conduit or a wooden dowel rod as a support for the roll of facing. This will be inserted through the holes in the unwind stand.

A cutting guide made from two adjacent 1" x 2" x 50" strips should be attached to the top of the plywood sheet to provide a square and straight edge in order to assist with cutting the material accurately. Fabricate the cutting guide as follows:

- Cut two wood strips approximately 1" x 2" x 50".
- The strips should be located at the required distance from the front edge of the table (*this dimension will be outlined later).
- Attach the two strips to the top of the work table, side by side with a 1/8" gap between strips to guide the knife blade when cutting the material. The strips should extend 1" on each side of the 48" work table.
- BE SURE THE CUTTING GUIDE IS SQUARE WITH THE 48" FRONT EDGE OF THE WORK TABLE.

Build a Work Table (con't)

(*) The WMP-RETRO material will be shipped in 47" wide and 128' long rolls. The lengths needed for installation should be 6" longer than the distance between purlins or girts. The cutting guide should be attached to the table with the 1/8" slot between the strips at the dimension of the purlin or girt spacing plus 6 inches. For example, if the roof purlins are 60" o.c., the cutting guide slot should be 66" from the front edge of the table. The guide can easily be repositioned to accommodate the variation in the purlins/girts spacing of the building.



Steps for Preparing and Installing WMP-RETRO: ROOF & WALLS

MAKE SURE THE CUTTING GUIDE IS SQUARE WITH THE FRONT EDGE OF THE TABLE.

- With a roll of material mounted on the unwind stand, pull out the material (with the white side down) to the front edge of the table.
- The material must be precisely aligned with the 96" edge of the work table.
- Secure the material to the table with two spring clamps.
- With the material square and straight, cut the material to length.
- Remove the clamps and reposition the material against the front edge of the cutting guide.
- In this position, the material will extend approximately 1-1/2" past the front edge of the table.
- Make sure the material is still precisely aligned with the 96" edge of the work table and secure with two spring clamps.
- Fold the exposed edge of the facing down against the end of the plywood sheet to create a well defined crease.
- This folded edge will be needed to accurately align the facing section to the purlins or girts.
- Continue to align, cut, and fold the facing in a sufficient quantity for the area to be covered.

Steps to install WMP-RETRO on the roof:

Please note that the instructions provided in this document are meant to be general installation guidelines and that each project may present unique circumstances that require modifications to the procedures outlined in this document. However, the basic concept should be followed by using the best installation practice available by mechanically attaching the facing on each side of the purlin or girt space, keeping the over-lapping edges tight and aligned to the purlins.

- Starting from the end wall of the building, the new facing should be positioned between the purlins and above any obstacles or obstructions with the folded edge tight against the web of the purlin and directly below the existing roof fasteners. See Fig. 1A.
- If the unfolded edge of the facing needs to be supported, use spring clamps to temporarily hold the facing to the lower flange of the opposite purlin.
- With the folded edge of the facing tight and aligned with the corner of the upper purlin flange, press it firmly toward the existing roof screws and impale the facing onto the threads of the exposed fasteners. See Fig. 2A.
- Mechanically secure the facing to the roof fasteners with self locking star washers using a suitable tool. This tool can be as simple as a short length of pipe or conduit. See Fig 3A.

Steps for Preparing and Installing WMP-RETRO: ROOF & WALLS (con't)

- If the roof has screw down panels, install a self locking washer on every other fastener at least every 12". For a standing seam roof, the self locking washer should be installed on only one of the two clip fasteners, the one closest to the web every 24".
- Where the folded edge overlaps the adjacent facing, install a 4" long section of wall angle (**) at this overlap to secure the seam prior to the next step with a 3/4" TEK screw located in the wall angle pointing slightly toward the roof.
Caution: Make certain the angle of the screws is shallow enough that you do not risk damaging the roof panels.
- The facing is now ready to be attached to the opposite purlin. Use a 45" long section of wall angle (**) to smooth wrinkles and to position the facing tight against the existing facing. When cutting the wall angles to length, be certain the ends do not have any burrs which will tear the facing during installation. See Fig. 4A.
- Next, pull the excess facing beyond the wall angle so the facing is taut and square and then move the wall angle tight against the purlin web and the existing facing. See Fig. 5A.
- Once the facing is positioned with the desired appearance and tight against the existing facing, secure the wall angle to the purlin. See Fig. 6A.
- Holding the wall angle tight in this position, attach it to the web of the purlin with 3/4" TEK screws or a nail gun. These fasteners should be located approximately 4" to 6" from each end and with one in the center of the wall angle. When operating any power tools, proper training and the appropriate safety equipment must be in place.
- The excess facing that extends beyond the wall angle should be trimmed off flush with the bottom edge of the wall angle. See Fig. 7A.
- Next, apply a small bead (1/8") of 100% silicone caulking between the overlapped seam of the new facing near the edge and press smooth. Wipe down any dirt or debris that may have adhered to the facing. See Fig. 8A.
- Continue to install the new facing by overlapping the long edges by 1-1/2".
- The direction of the installation may depend on the location of the roof fastener.

(**) These wall angles should be similar in size and gauge to the wall angles typically used for acoustical ceiling grid, or any other suitable support device such as drywall plastic or metal corner bead.

Steps for Preparing and Installing WMP-RETRO: ROOF & WALLS (con't)



Steps for Preparing and Installing WMP-RETRO: ROOF & WALLS (con't)

Steps to Install WMP-RETRO on the Walls:

- Starting from the end wall of the building, the new facing should be draped down into the girt cavity. The folded edge should be tight against the web of the girt on the opposite side of the cavity from the girt flange with the panel fasteners. See Fig. 1B.
- With the folded edge of WMP-RETRO facing tight and aligned with the corner of the girt web and tight against the existing facing, position a wall angle in the fold and secure with fasteners, making sure they are installed in the web of the girt only. Caution: Make certain the screws are installed only in the horizontal web of the girt and not the flange to avoid damaging the exterior wall panel. See Fig. 2B.
- The facing is now ready to be attached to the opposite girt by pulling the facing taut and toward the existing fasteners of the girt flange. With the facing taut and square, impale the facing onto the threads of the exposed fasteners. See Fig. 3B.
- Mechanically secure the facing to the wall fasteners with self locking star washers using a suitable tool. This tool can be as simple as a length of pipe or conduit. The self locking washers can be attached to the fasteners that are 12" on center, even if the spacing is less than 12". See Fig. 4B.



Fastener/Tool List:

Self Locking Star Washers
1" Round, Galvanized, 12 Gauge,
Mild Steel, Beveled Edge,
4.5 mm Center Hole

Gemco

1019 Griggs Street

Danville, IL 61832

217-446-7900

<http://www.gemcoinsulation.com>

Nail Gun

Model No: Max CN5655

Pins: Part No: 2359N

Aerosmith Fastening Systems

5621 Dividend Road

Indianapolis, IN 46241

800-528-8183

Disclaimer:

The preceding is provided as a general guideline of an appropriate method of resurfacing and re-covering damaged faced insulation in a metal building. It is not intended for, nor is it suitable for, all instances where metal building insulation facing is to be applied as a resurfacing or re-covering of damaged insulation facing. Such an application should only be done after any damaged or missing insulation is repaired or replaced and any building envelope issues, including infiltration of water, are addressed. The installer should always read and follow the manufacturer's written guideline for the application of the product, abide by all applicable building codes and all industry and government safety rules when engaging in any construction activity, including resurfacing or re-covering damaged facing insulation in a metal building. A suitable work table should be available to cut and fold the WMP-RETRO material to the proper configuration prior to installation.