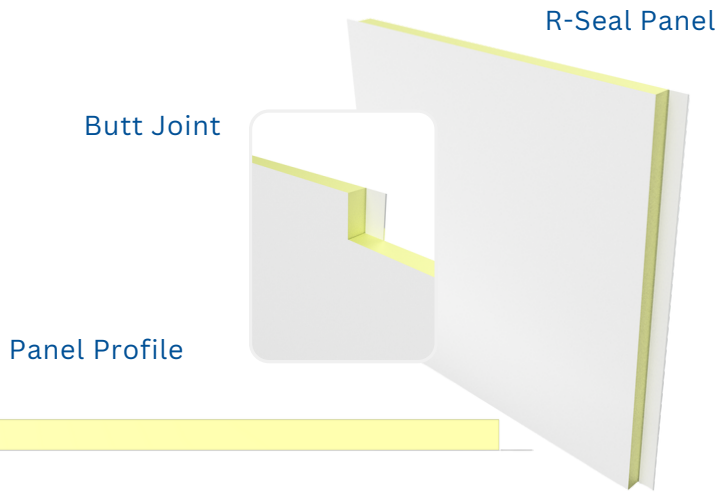




# 2" R-Seal Rigid Envelope Insulation Panel

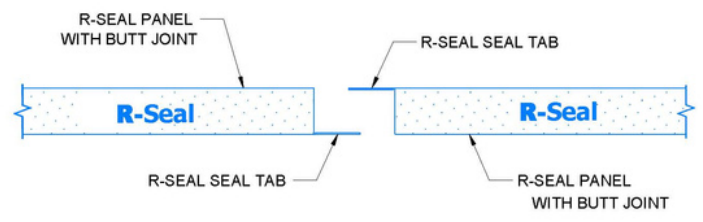
R-Seal is a comprehensive proprietary insulation system specifically designed for metal building owners and erectors. R-Seal provides the highest value in the industry by exceeding energy code and air/water barrier requirements for continuous insulation at the lowest installed cost.



## PRODUCT SPECIFICATIONS

WIDTH COVERAGE	3'-6 5/8" / 3.5521'
THICKNESS	2"
*STANDARD LENGTH	8'-0" TO 53'-0"
EXTERIOR PROFILE	PS (Polypropylene/Scrim) Bonded to rigid foam
EXTERIOR FACE	Uniformed Dimpling Pattern
INTERIOR PROFILE	PS (Polypropylene/Scrim) Bonded to rigid foam
INTERIOR FACE	Uniformed Dimpling Pattern
JOINT	Butt
FASTENING	Through fastened with support channels at finished floor and eave areas
CORE	Rigid closed cell modified Polyurethane/PUR/PIR core, structural and fire rated components between fiber-reinforced polypropylene

## R-Seal Tape Tab Detail



## R-Value and U-Factor

R-Value	U-Factor	Thickness/Inches	Joint Style
R-15	0.064	2.0"	Butt
R-18.75	0.053	2.5"	Tongue & Grooved
R-22.5	0.044	3.0"	Tongue & Grooved
R-30	0.031	4.0"	Ship Lap
R-37.5	0.027	5.0"	Ship Lap

\*Custom Length Panels are Available Upon Request\*