

www.bayinsulation.com

The **Bay Runner Insulation System®** is a patented* fall prevention and fall protection, facing-first insulation system for roofing metal buildings.



The Bay Runner Insulation System® comes pre-assembled and ready to go.

1 2 3

From setup to start of roofing can be up to **50%** faster than other facing-first systems.



Uncrate the machines.



Insert the guardrails.



Fly the machines to the roof.

SAFE

The Bay Runner Insulation System® is designed to help with **leading edge fall prevention and fall protection**. Tested and verified by the independent third-party lab Intertek, the system covers and exceeds the following OSHA standards:

FALL PREVENTION

OSHA 29 CFR 1926.754(e)(3)(i) – Covers for roof and floor openings shall be capable of supporting, without failure, twice the weight of the employees, equipment and materials that may be imposed on the cover at any one time.

FALL PROTECTION

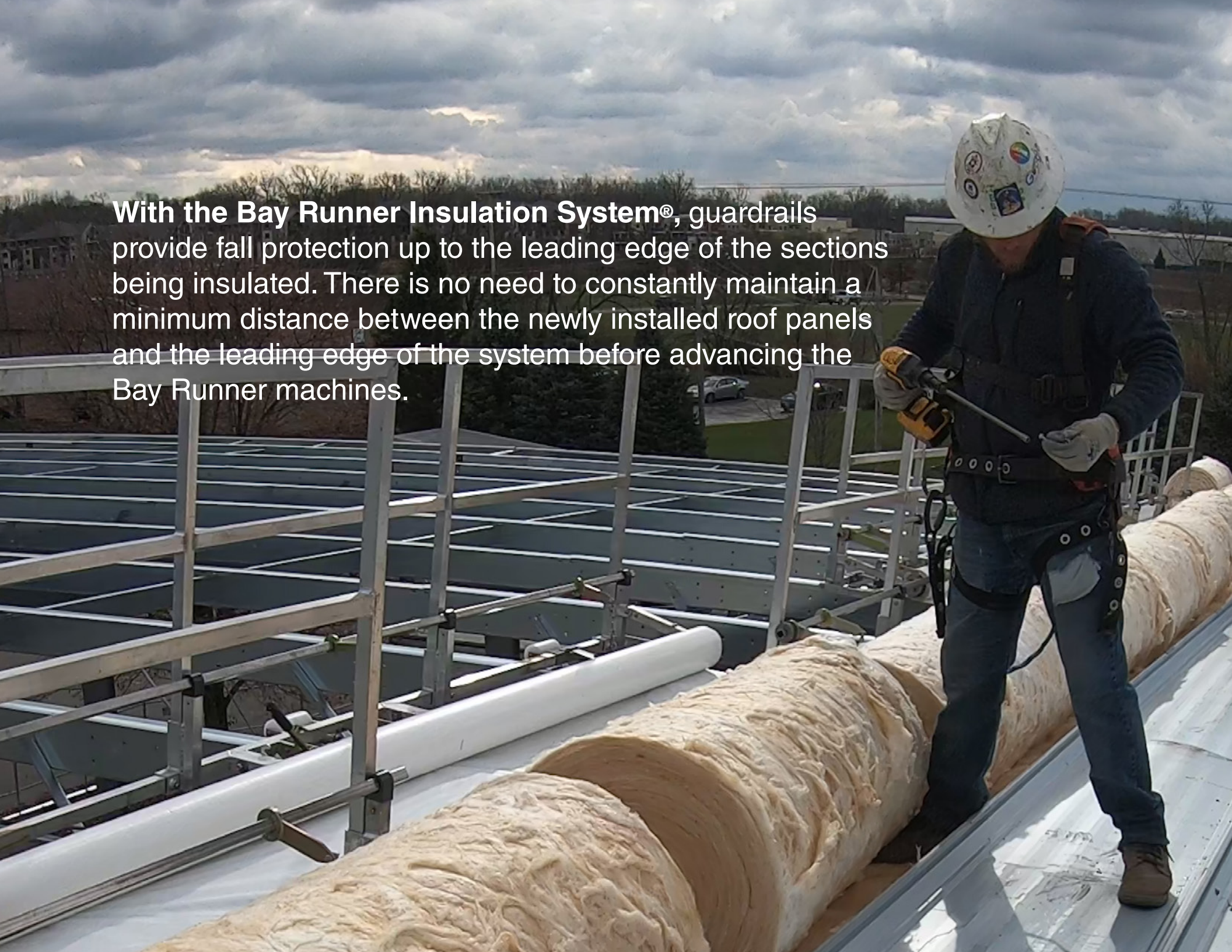
OSHA 29 CFR 1926.502(b)(3) – Guardrail systems shall be capable of withstanding, without failure, a force of at least 200 pounds (890 N) applied within 2 inches (5.1 cm) of the top edge, in any outward or downward direction, at any point along the top edge.

OSHA 29 CFR 1926.502(b)(4) – When the 200-pound (890 N) test load specified in paragraph (b)(3) of this section is applied in a downward direction, the top edge of the guardrail shall not deflect to a height less than 39 inches (1.0 m) above the walking/working level.

The Bay Runner Insulation System® protects the installation crew while the building is being insulated and roofed by providing leading edge fall prevention and fall protection when installed according to the Bay Runner instructions.

Bay Runner is only one component of a total fall prevention plan for the job. Other means of fall protection are still required within 6 feet of any roof edge or opening where Bay Runner is not being used.

With the Bay Runner Insulation System®, guardrails provide fall protection up to the leading edge of the sections being insulated. There is no need to constantly maintain a minimum distance between the newly installed roof panels and the leading edge of the system before advancing the Bay Runner machines.



EFFICIENT



SAVES TIME

Fabric rolls are pre-loaded on the machines, making setup to roof start up to 50% faster than other facing-first systems. For double-sloped roofs, the transition from one side to the other is just as quick and easy.



REQUIRES LESS MANPOWER

Only one person is needed to easily advance the Bay Runner Insulation System®. Other systems require multiple people and machines to advance a single roll of fabric, requiring coordination and valuable time away from roofing.



INCREASES PRODUCTIVITY

The Bay Runner Insulation System® offers a quicker setup and less manpower to advance the machines. It also allows the roofing crew to work right up to the machines before advancing again. The guardrails on the machines provide leading edge fall protection, so there is no need to maintain a minimum distance between roof panels and the leading edge of the system. This all translates into more time and manpower dedicated to roofing and insulating. **Roofing crews have reported installing a daily average of 7,500 ft² of roof using a single layer of insulation, and 5,000 ft² of roof using a double layer of insulation.**



“When you open the crate up, you load a handrail on each piece as it comes out and send it directly to the roof. So it’s a lot quicker than any other system we’ve used.”

-Bill Cook
Project Superintendent



“My first impression? It was a lot easier. Instead of having three guys per roll of fabric you have one guy. I didn’t believe it until I pushed the first one out. It was a lot easier.”

-Eric Darby
Roofer



“I was impressed with it. It’s pretty sound, durable and easy setup and tear down. They glide very well and the fact that you can do it with one person makes a huge difference.”

-Justin Buskirk
Roofer



Bay Insulation Systems, with locations across North America, has the Experience, superior Quality products, and top-rated Service to meet our customers' needs. For more information, contact an office near you or visit us at www.bayinsulation.com.

ARIZONA

2240 W. Peoria Avenue
Phoenix, AZ 85029
602-733-6570
Fax: 602-532-7214

CALIFORNIA

3878 S. Willow Avenue
Suite 103
Fresno, CA 93725
559-268-6330
Fax: 559-268-6363

COLORADO

14200 E. 33rd Place
Suite B
Aurora, CO 80011
303-371-0037
Fax: 303-576-9311

CONNECTICUT

15 Bradley Park Road
East Granby, CT 06026
860-785-9797
Fax: 860-831-1600

FLORIDA

1075 Gills Drive
Suite 700
Orlando, FL 32824
407-438-1288
Fax: 407-438-0995

FLORIDA

10104 North Palafox Street
Pensacola, FL 32534
850-438-5520
Fax: 850-438-5543

GEORGIA

6675 Corners Industrial Ct.
Suite C
Norcross, GA 30092
770-209-9190
Fax: 770-209-9995

INDIANA

335 Strategy Drive
Indianapolis, IN 46229
317-322-0830
Fax: 317-322-0850

KENTUCKY

4022 Produce Road
Louisville, KY 40218
502-964-1553
Fax: 502-964-1546

LOUISIANA

2525 Wooddale Boulevard
Baton Rouge, LA 70805
225-214-1600
Fax: 225-214-1605

MINNESOTA

6095 East River Road
Fridley, MN 55432
763-572-0052
Fax: 763-572-0146

MISSOURI

9651 NE Parvin Road
Suite 100
Kansas City, MO 64161
816-861-8892
Fax: 816-861-9117

7208 Weil Avenue
Suite C
St. Louis, MO 63119
314-645-7625
Fax: 314-781-8020

NORTH CAROLINA

1015 E. Springfield Drive
High Point, NC 27263
336-431-4202
Fax: 336-431-9169

2114 Atlantic Avenue
Suite 108
Raleigh, NC 27604
919-821-5010

OHIO

4800 Van Epps Road
Brooklyn Heights, OH 44131
216-351-5505
Fax: 216-351-5508

PENNSYLVANIA

40 Hilton Street
Easton, PA 18042
610-258-7335
Fax: 610-258-7442

TENNESSEE

5445 E. Raines Road
Suite 12
Memphis, TN 38115
901-565-9300
Fax: 901-531-8219

TEXAS

921 W. Bethel Road
Bldg. 300, Suite 301
Coppell, TX 75019
469-420-0600
Fax: 469-420-0700

9500 Clay Road
Houston, TX 77080
713-939-8001
Fax: 713-939-1299

* 111 East McCarty Lane
San Marcos, TX 78666
512-353-4064
Fax: 512-353-4349

VIRGINIA

* 2731 Plantation Road NE
Roanoke, VA 24012
540-986-2542
Fax: 540-362-8134

WASHINGTON

3104 142nd Avenue E
Suite 101
Sumner, WA 98390
253-299-2220
Fax: 425-656-5245

WISCONSIN

Corporate Headquarters
2929 Walker Drive
Green Bay, WI 54311
920-406-4200
Fax: 920-406-4242

ONTARIO, CANADA

560 Admiral Court
London, Ontario N5V 4L3
519-659-9003
Fax: 519-659-9007

* Includes Bay Insulation
Contracting Office

