



**The Most Thermally Efficient Insulation System**



For Pre-Engineered Metal Buildings

# Installation as Easy as 1, 2, 3.

- 1** Apply BayMax® Insulated Liner Panel



- 2** Finish Joints



- 3** Install Fiberglass



# BayMax® Highest System R-Values

## BAYMAX PANELS

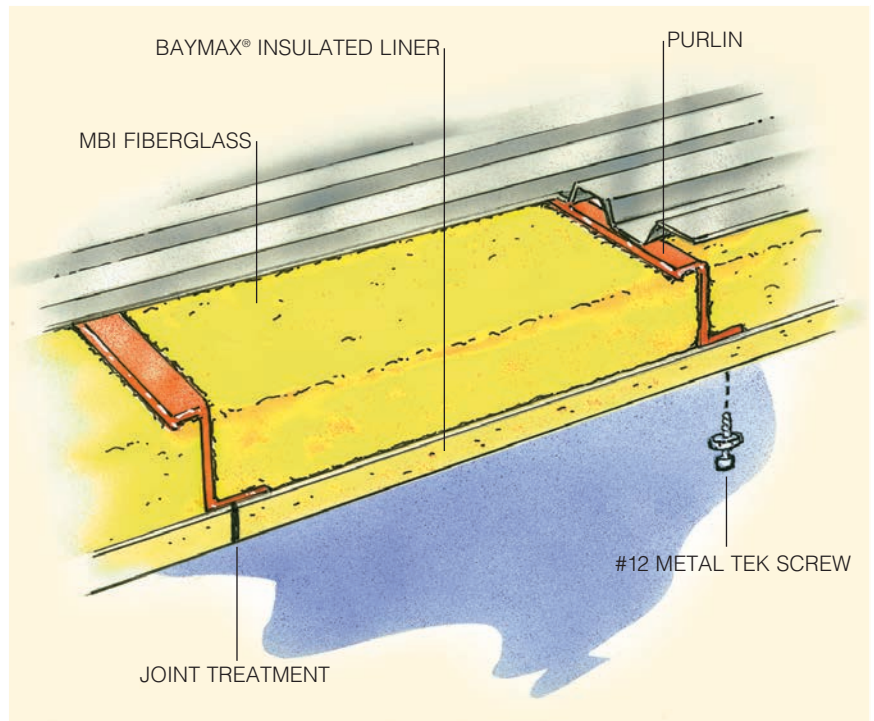
|           |        |      |
|-----------|--------|------|
| Thickness | 1½"    | 2"   |
| R-Value   | R-9.75 | R-13 |

## FIBERGLASS\*

|                 |      |      |      |      |      |
|-----------------|------|------|------|------|------|
| Between Purlins | 8"   | 9½"  | 6"   | 8"   | 9½"  |
| Across Purlins  | None | None | 4"   | 4"   | 4"   |
| R-Value         | R-25 | R-30 | R-32 | R-38 | R-43 |

## BAYMAX SYSTEM

|                            |         |         |         |         |
|----------------------------|---------|---------|---------|---------|
| BayMax Panels              | 1½"     | 2"      | 1½"     | 2"      |
| Fiberglass Between Purlins | 8"      | 8"      | 9"      | 9"      |
| R-Value*                   | R-22.43 | R-25.47 | R-23.54 | R-26.58 |
| U-Factor*                  | 0.0448  | 0.0393  | 0.0425  | 0.0376  |



The Most Thermally Efficient Insulation System

# BayMax® Options

## Insulated Liner Panel Finishes

- Sheathing  
Silver aluminum
- Light Duty White Embossed (LD)  
Attractive and economical
- Heavy Duty White Embossed (HD)  
Better durability and appearance
- Heavy Duty Plus White Embossed (HDP)  
For high-impact application

## Insulated Liner Panel Thicknesses

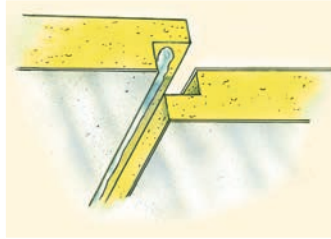
1½", 2"

## Joint Treatment

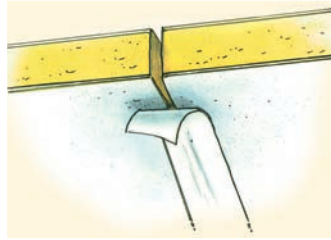
- Shiplap Edge with Sealant  
Easy to install
- Joint Tape  
Attractive and economical
- White PVC Clip Strip and Sealant  
Better moisture control and appearance

## Fiberglass

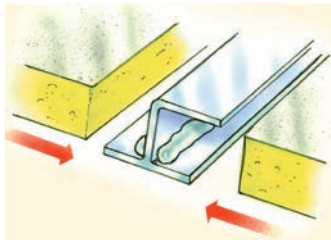
R-25, R-30, R-32, R-38, R-43



SHIPLAP EDGE WITH SEALANT



JOINT TAPE



PVC CLIP STRIP AND SEALANT

# BayMax® Advantages



## Highest System R-Values

Meets ASHRAE 90.1 codes

## All Components UL and FM Listed

Makes building code approval and insurability easy

## Roof and Wall Applications

For maximum energy savings

## Attractive White BayMax® Insulated Liner Panel

Hides the unsightly purlins, is USDA approved and pressure washable

## Low .03 Vapor Permeability

Reduces condensation, assuring long term thermal and structural performance

## May be Installed Prior to or After Roof is in Place

Can be used in new construction or existing buildings

## Easy System to Install

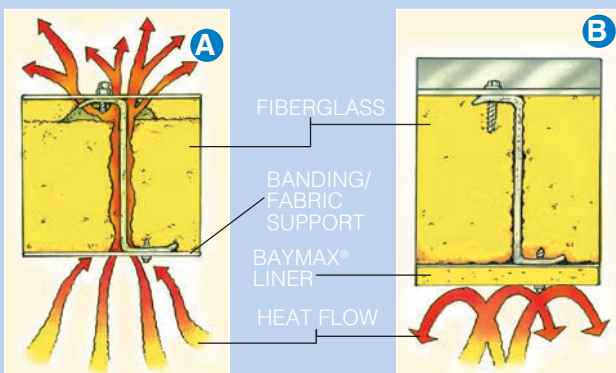
Saves labor, quicker job completions

# BayMax® Solves Insulation Problems

**Problem:** Compression, Conduction & Voids (Diagram A)

**Solution:** BayMax® (Diagram B)

Unlike other systems that create insulation voids and thermal short circuits which significantly reduce their installed R-value performance, BayMax® features a continuous, uncompressed layer of BayMax® insulated liner panel below the purlin with a single layer of uncompressed fiberglass insulation, completely filling the cavity space. The unique combination of fiberglass and insulated liner panel allows for unmatched insulation levels.



**Problem:** Non UL Rated Materials

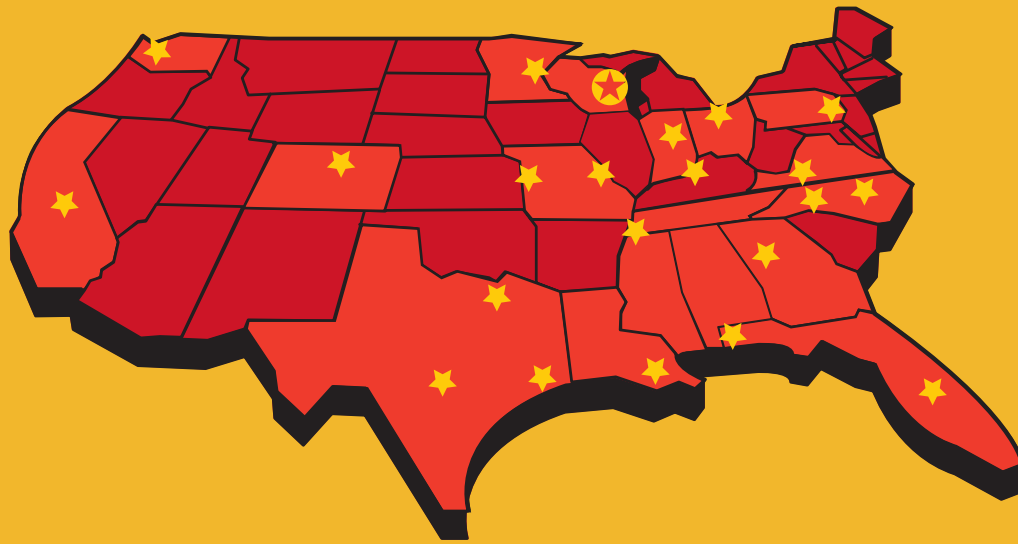
**Solution:** BayMax®

UL Report #'s R16360 and R16361 FM Report #OWIAZ.AM BayMax® foam boards meet UL723 and FM4880 fire ratings for the lowest insurance rates in an insulated structure. The product also complies with the requirements of BOCA, ICBO, and SBCCI. (Refer to BayMax® Data Sheet for report numbers, product details, and warnings.)

**Problem:** Appearance

**Solution:** BayMax®

The insulated liner panel provides an interior finish that is flat, smooth and bright.



## BayMax® Distributor Locations

### CALIFORNIA

Bay Insulation of California Inc.  
Fresno, CA 559-268-6330

### COLORADO

Bay Insulation of Colorado  
Aurora, CO 303-371-0037

### FLORIDA

Bay Insulation of Florida  
Orlando, FL 407-438-1288  
Bay Insulation of Pensacola  
Pensacola, FL 850-438-5520

### GEORGIA

Bay Insulation of Georgia  
Norcross, GA 770-209-9190

### INDIANA

Bay Insulation of Indiana Inc.  
Indianapolis, IN 317-322-0830

### KENTUCKY

Sexton-Bay Insulation  
Louisville, KY 502-964-1553

### LOUISIANA

Bay Insulation of Louisiana Inc.  
Baton Rouge, LA 225-214-1600

### MINNESOTA

Bay Insulation of Minnesota Inc.  
Fridley, MN 763-572-0052

### MISSOURI

Bay Insulation of Missouri  
Kansas City, MO 816-861-8892  
Bay Insulation of Missouri  
St. Louis, MO 314-645-7625

### NORTH CAROLINA

Bay Insulation of North Carolina Inc.  
High Point, NC 336-431-4202  
Bay Insulation Systems of Raleigh  
Raleigh, NC 919-821-5010

### OHIO

Bay Insulation of Ohio  
Brooklyn Heights, OH 216-351-5505

### PENNSYLVANIA

Bay Insulation of Pennsylvania  
Easton, PA 610-258-7335

### TENNESSEE

Bay Insulation of Tennessee Inc.  
Memphis, TN 901-565-9300

### TEXAS

Bay-Star Insulation of Dallas  
Dallas, TX 469-420-0600  
Bay-Star Insulation Co.  
Houston, TX 713-939-8001  
Bay Insulation of South Texas  
San Marcos, TX 512-353-4064

### VIRGINIA

Bay Insulation of Virginia Inc.  
Roanoke, VA 540-986-2542

### WASHINGTON

Bay Insulation of Washington  
Sumner, WA 253-299-2220

### WISCONSIN

Bay Insulation of Wisconsin  
Green Bay, WI 920-406-4200



2929 Walker Drive / P.O. Box 9229  
Green Bay, WI 54308-9229  
800-442-8464 / 920-406-4200  
www.bayinsulation.com

